

CMA CGM

CGMU 516737 5

45R1

MAX. GROSS	35.000 kg
	77.160 lbs
TARE	4.610 kg
	10.160 lbs
NET	30.390 kg
	67.000 lbs
CU. CAP.	67.4 m ³
	2.380 cu.ft.

CAUTION
9'-6"
HIGH



CIMC

Ancho: 2.50 m.

Largo: 12.50 m.

Altura: 1.30 m.

TLA-981

PERU
TLA-981



METAL WORK



003SF061351



JUANA PE

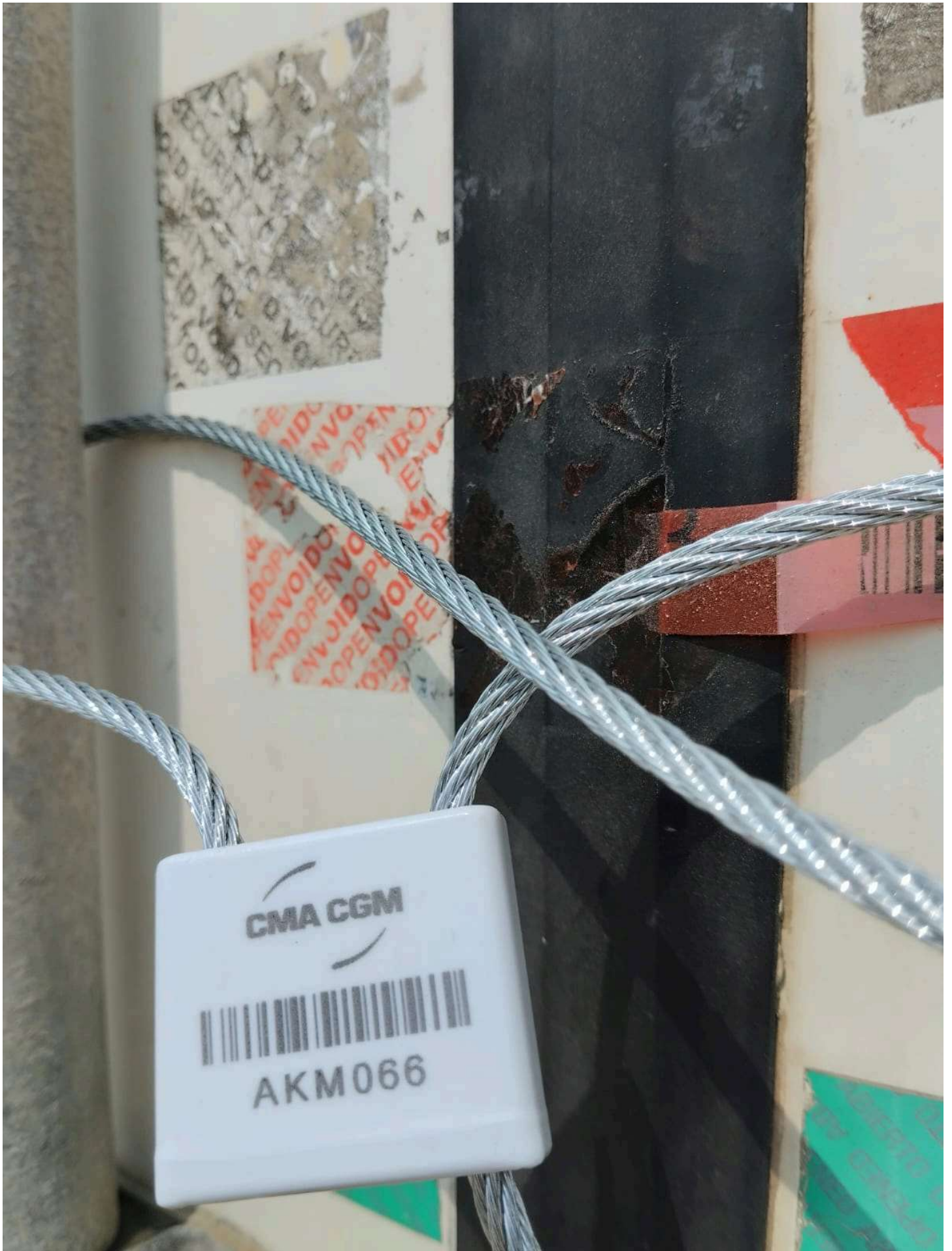
003SF061351

CMA CGM

L8602908



86



CMA CGM



AKM066

SECURITY LABEL

MA CGM

CM186406



PAPER



⏪ ⏩



ECOSAC
ADUANA PE
002A0036543

DUVA
P