



SEKU 907439 5  
45R1

MGW	35000 kg	77160 lbs
Tare	4580 kg	10100 lbs
Payload	30420 kg	67060 lbs
Cube	67.4 m <sup>3</sup>	2380 ft <sup>3</sup>

Add Tare Weight of Generating Set When Fitted

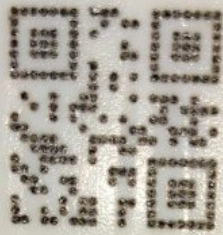
Seaco SRL. Bridgetown, Barbados

OK

WARNING  
SUPER HEAVY



003PL033786



IANA PE

003PL033786



ECOSAC  
ADUANA PE  
002AQ031862

PE

C

002AQ031862



CMA CGM



AJZ850

SECURITY LABEL

CMA CGM

CM193939



