



MMAU 127 173 7
45R1



MAERSK



MAERSK

X

APPROVED FOR TRANSPORT UNDER CUSTOMS SEAL
DATE: 04/04/14
BY: [Signature]
CAY SAFETY WARNING

B

maerskline.com

MAX. GROSS	34,000 KGS.
	74,960 LBS.
TARE	4,210 KGS.
	9,280 LBS.
NET	29,790 KGS.
	65,680 LBS.
CU. CAP.	67.6 CU.M
	2,387 CU.FT



SuperTAC inside

MCI

Ancho : 2.50 m.

Largo : 12.50 m.

Altura : 1.30 m.

TLA-981

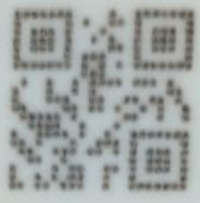
PERU
TLA-981

METAL WORK



危險！箱內缺氧。

003PL033895



ANA PE

003PL033895

ML-PE0580031



