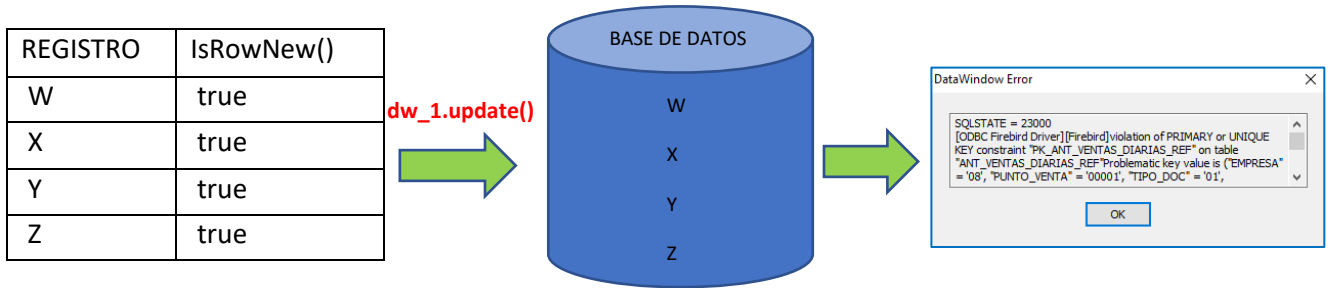
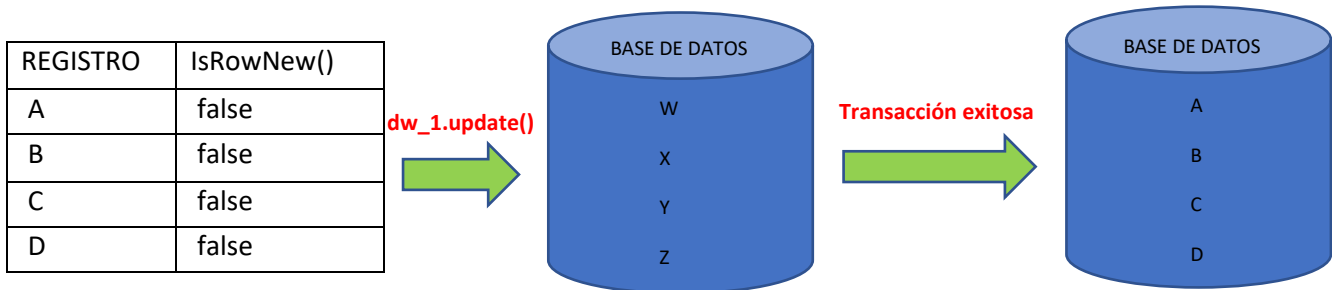


TRANSACCIONES DEL DATAWINDOW A LA BASE DE DATOS EN POWER BUILDER

1. INSERTAR REGISTRO



2. ACTUALIZAR REGISTRO



3. ELIMINAR REGISTRO

REGISTRO	IsRowNew()
A	true
B	true
C	true
D	true

dw_1.update()

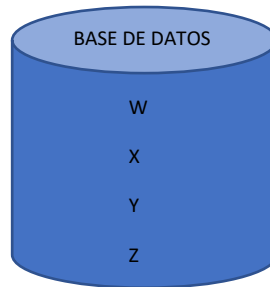


No realiza transacción

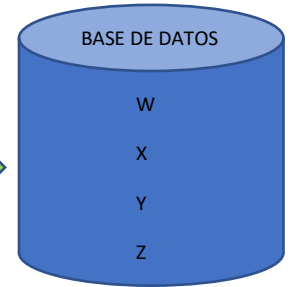


REGISTRO	IsRowNew()
W	true
X	true
Y	true
Z	true

dw_1.update()

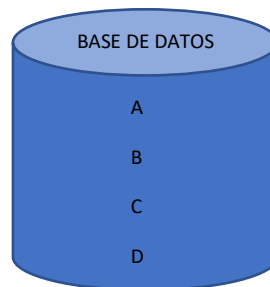


No realiza transacción

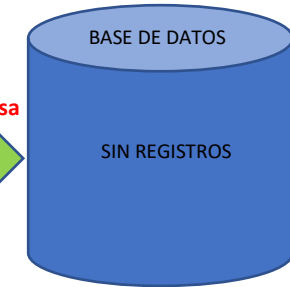


REGISTRO	IsRowNew()
A	false
B	false
C	false
D	false

dw_1.update()

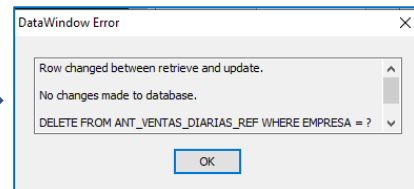


Transacción exitosa

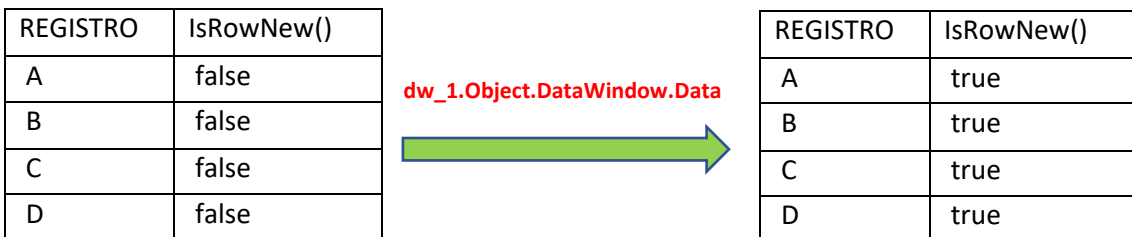
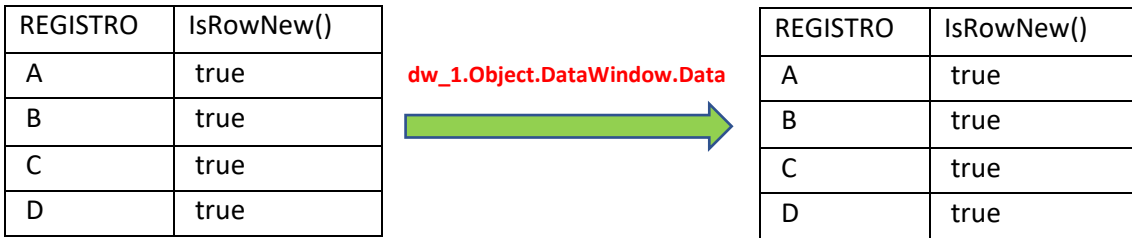


REGISTRO	IsRowNew()
W	false
X	false
Y	false
Z	false

dw_1.update()



IMPORTACIÓN DE DATAWINDOW A OTRO DATAWINDOW O DATASTORE



TRANSACCIÓN DE DATAWINDOW O DATASTORE

